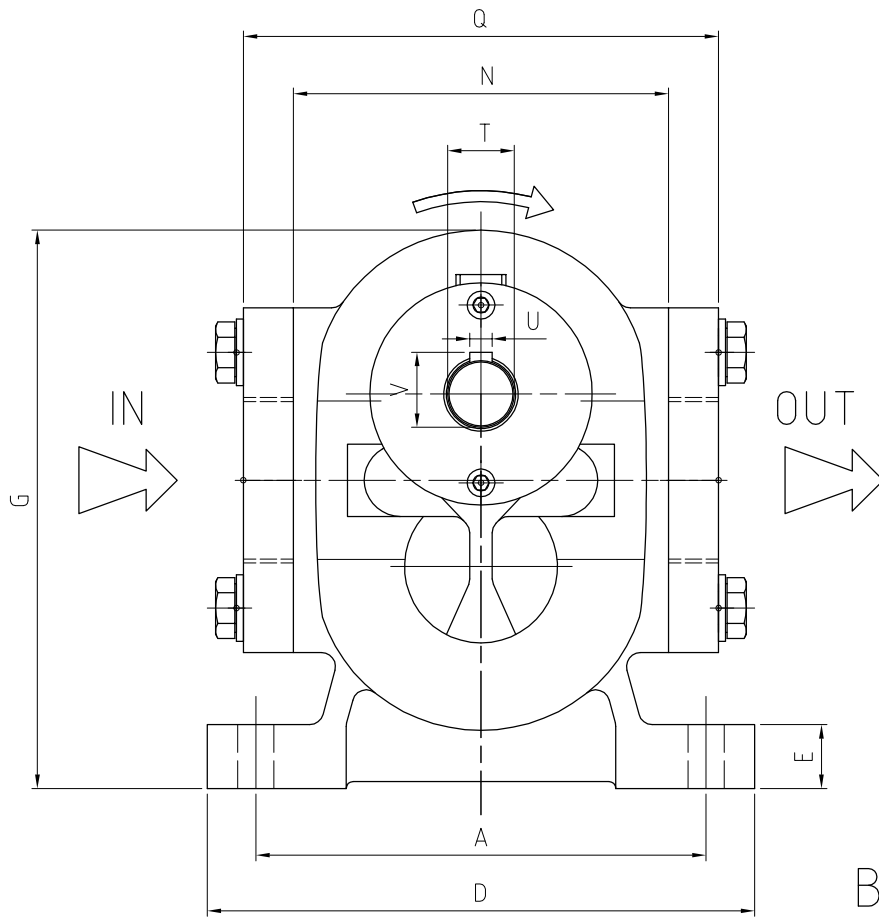
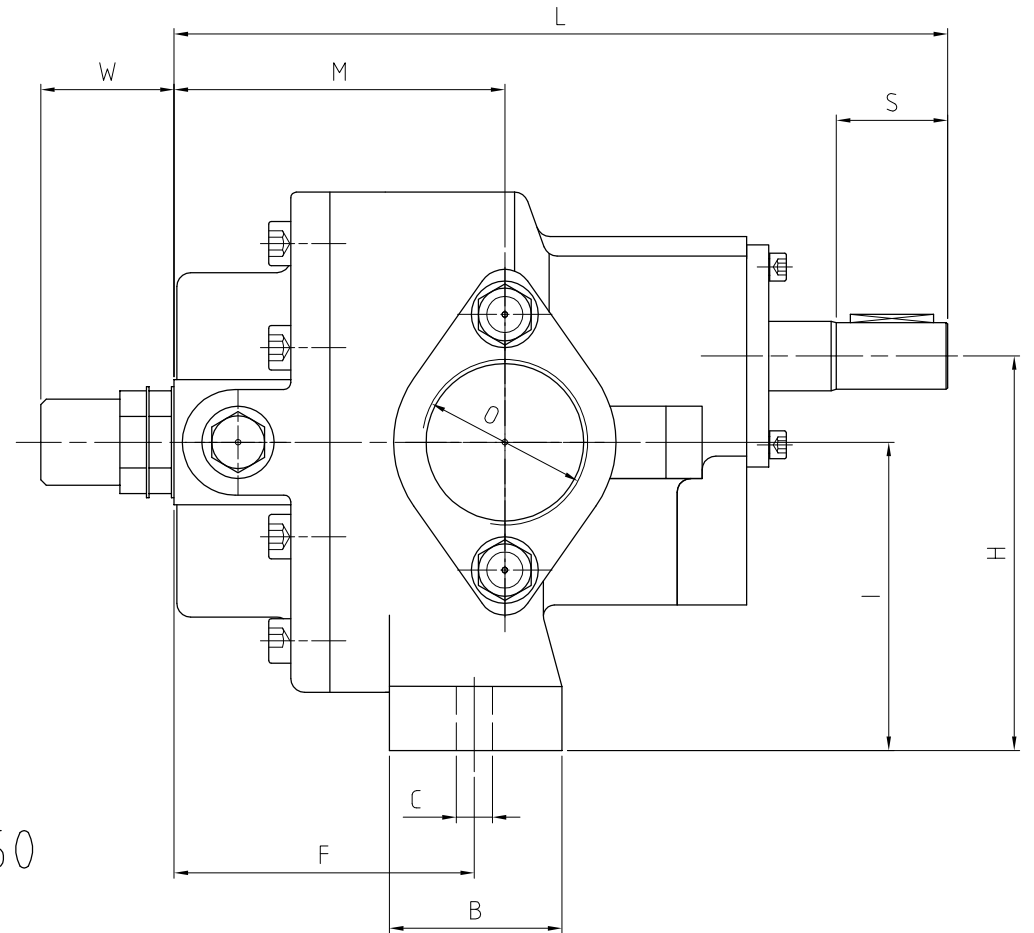


POMPA AD INGRANAGGI SERIE B CON TENUTA MECCANICA O BADERNA
GEAR PUMP RANGE B WITH MECHANICAL SEAL OR PACKING RINGS



B50 - B150



**POMPA AD INGRANAGGI SERIE B CON TENUTA MECCANICA O BADERNA
GEAR PUMP RANGE B WITH MECHANICAL SEAL OR PACKING RINGS**

| Tipo Type | Dimensioni - Dimensions* [mm] | | | | | | | | | | | | | | | | | | | | Weight [kg] | |
|--------------|-------------------------------|-----|------|-----|----|-----|-----|-----|-----|-----|-----|-----|--------|-----|----|----|----|----|-----|-----|----------------|------|
| | A | B | C | D | E | F | G | H | I | L | M | N | O | Q | S | T | U | V | W | Y | | Z |
| B5 | 106 | 35 | 11,5 | 130 | 12 | ... | 117 | 80 | 64 | 160 | 60 | 88 | 1/2" | ... | 28 | 12 | 4 | 14 | 47 | ... | ... | 2,9 |
| B10 | 106 | 35 | 11,5 | 130 | 12 | ... | 117 | 80 | 64 | 170 | 70 | 88 | 1/2" | ... | 28 | 12 | 4 | 14 | 47 | ... | ... | 3,2 |
| B15 | 106 | 40 | 11,5 | 130 | 12 | ... | 117 | 80 | 64 | 180 | 60 | 88 | 3/4" | ... | 28 | 12 | 4 | 14 | 47 | ... | ... | 3,6 |
| B25 | 106 | 40 | 11,5 | 130 | 12 | ... | 117 | 80 | 64 | 190 | 74 | 88 | 3/4" | ... | 28 | 12 | 4 | 14 | 47 | ... | ... | 3,9 |
| B40 | 125 | 45 | 12 | 155 | 15 | ... | 139 | 97 | 77 | 235 | 85 | 122 | 1" | ... | 40 | 15 | 5 | 18 | 47 | ... | ... | 7,0 |
| B50 | 125 | 50 | 12 | 156 | 18 | 77 | 160 | 114 | 92 | 235 | 85 | 100 | 1 1/2" | 136 | 40 | 15 | 5 | 18 | 47 | ... | ... | 9,9 |
| B70 | 125 | 50 | 12 | 156 | 18 | 87 | 160 | 114 | 92 | 245 | 95 | 100 | 1 1/2" | 136 | 40 | 15 | 5 | 18 | 47 | ... | ... | 10,1 |
| B100 | 162 | 62 | 13 | 200 | 22 | 88 | 205 | 142 | 111 | 261 | 101 | 135 | 2" | 172 | 40 | 24 | 8 | 27 | 54 | ... | ... | 17,7 |
| B150 | 162 | 62 | 13 | 200 | 22 | 108 | 205 | 142 | 111 | 281 | 121 | 135 | 2" | 172 | 40 | 24 | 8 | 27 | 54 | ... | ... | 20,4 |
| B200 | 140 | 150 | 13 | 170 | 16 | 38 | 200 | 142 | 105 | 305 | 180 | 210 | 2 1/2" | 274 | 60 | 28 | 8 | 31 | 74 | 120 | 210 | 27,3 |
| B250 | 140 | 162 | 13 | 170 | 16 | 38 | 200 | 142 | 105 | 317 | 192 | 210 | 2 1/2" | 274 | 60 | 28 | 8 | 31 | 74 | 132 | 210 | 33,0 |
| B300 | 140 | 174 | 13 | 170 | 16 | 38 | 200 | 142 | 105 | 329 | 204 | 210 | 2 1/2" | 274 | 60 | 28 | 8 | 31 | 74 | 144 | 210 | 35,0 |
| B350 | 140 | 186 | 13 | 170 | 16 | 38 | 200 | 142 | 105 | 341 | 216 | 210 | 2 1/2" | 274 | 60 | 28 | 8 | 31 | 74 | 156 | 210 | 36,5 |
| B400 | 140 | 200 | 13 | 170 | 16 | 38 | 200 | 142 | 105 | 355 | 230 | 210 | 2 1/2" | 274 | 60 | 28 | 8 | 31 | 74 | 170 | 210 | 38,0 |
| B450 | 192 | 174 | 14,5 | 220 | 20 | 40 | 258 | 188 | 140 | 370 | 222 | 260 | 3" | 296 | 55 | 32 | 10 | 39 | 104 | 140 | 250 | 45,0 |
| B500 | 192 | 183 | 14,5 | 220 | 20 | 40 | 258 | 188 | 140 | 379 | 231 | 260 | 3" | 296 | 55 | 32 | 10 | 39 | 104 | 149 | 250 | 48,0 |
| B550 | 192 | 192 | 14,5 | 220 | 20 | 40 | 258 | 188 | 140 | 388 | 240 | 260 | 3" | 296 | 55 | 32 | 10 | 39 | 104 | 158 | 250 | 51,0 |
| B600 | 192 | 201 | 14,5 | 220 | 20 | 40 | 258 | 188 | 140 | 397 | 249 | 260 | 3" | 296 | 55 | 32 | 10 | 39 | 104 | 167 | 250 | 55,0 |

* Dimensioni non impegnative - Dimensions are not binding